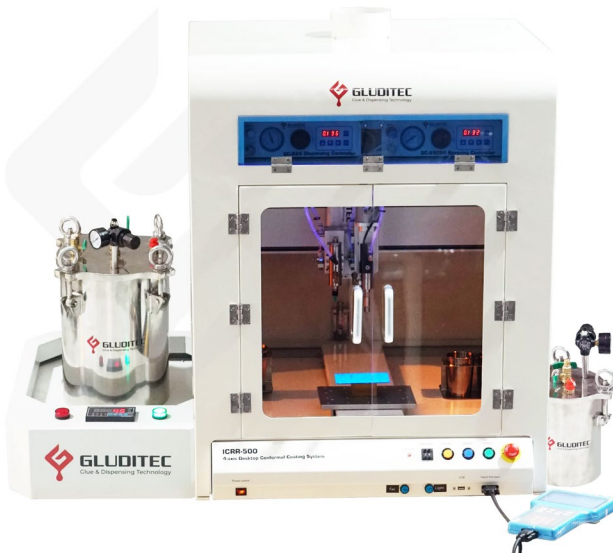


SER-500DDC

Desktop Conformal Coating System



SER-500CDD is an innovative desktop conformal coating system developed by GLUDITEC, designed to enhance the precision and efficiency of coating applications. This advanced system integrates a versatile 3-axis robotic dispensing mechanism, allowing for intricate and customizable coating patterns. With dual switching valves, the SER-500CDD can handle a variety of coating requirements, making it suitable for different materials and application areas. Additionally, it features a comprehensive liquid management system with monitoring capabilities for optimal performance. Enclosed in a protective casing, the system ensures user safety while providing manual inspection options for quality assurance, making it ideal for modern manufacturing environments.

FEATURES

- Dispensing area from 200x200x100 mm to 600x500x100 mm
- Dot, Lines, Arc etc. and 3D dispensing path is available.
- 100 programs, 4000 points per program.
- A hand-held Teach Pendant is provided for simple and intuitive programming functions.
- Windows SRE software is available for CAD file input (optional).
- **Compact Design:** Ideal for lab environments and small-scale production, fitting easily on a desk.
- **Precision Application:** Equipped with advanced dispensing technology for accurate coating of printed circuit boards (PCBs) and other electronic components.
- **Adjustable Settings:** Allows customization of spray patterns, coating thickness, and application speed for various materials.
- **Selective Coating:** Capable of applying coatings only to specific areas, reducing material waste.

OPTIONS



Dual Table



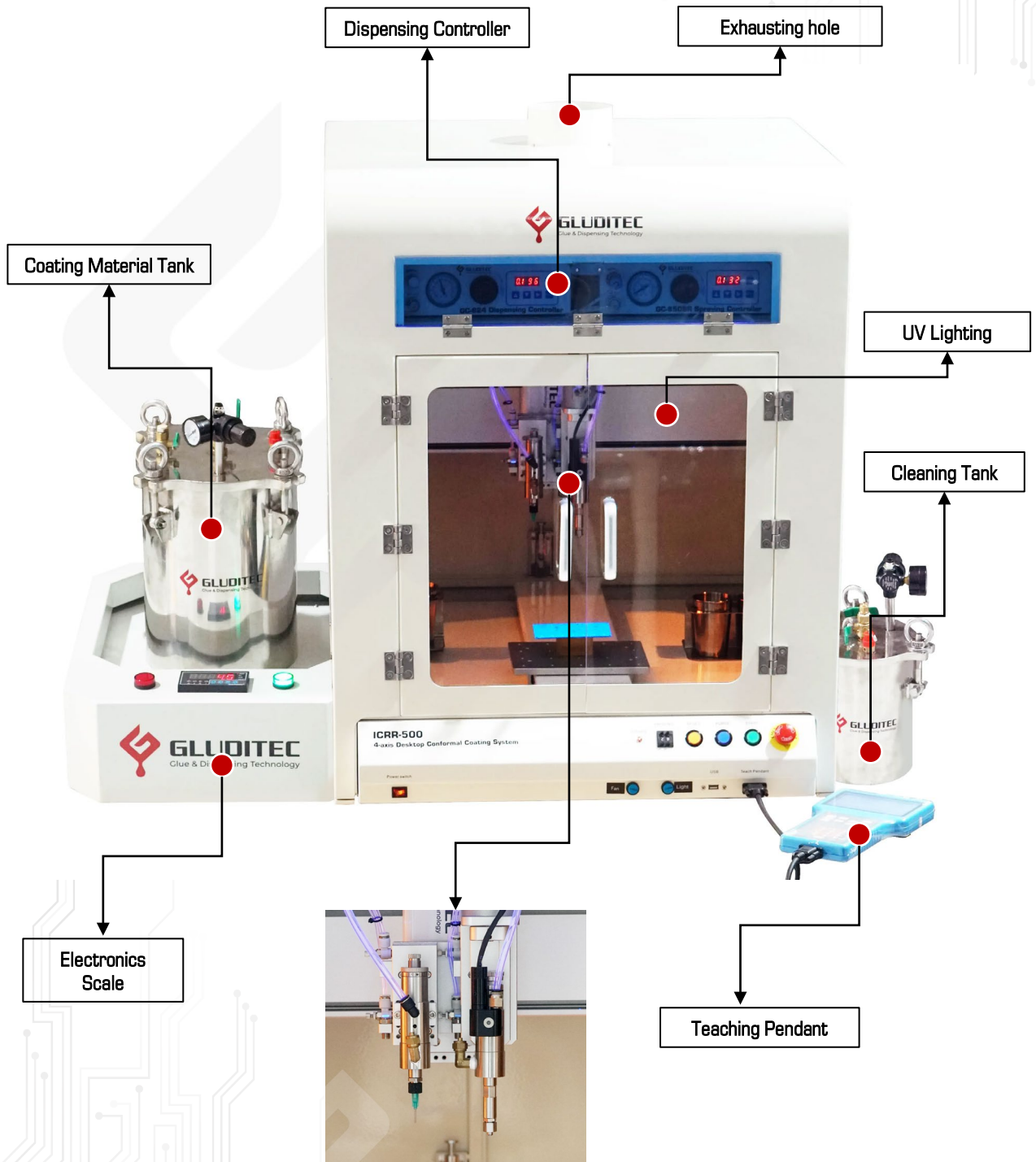
Dual Valve



Different tank sizes

SER-500DC

Desktop Conformal Coating System



Dual Switching Valve

- GV-697
- GV-575

SER-500DC

Desktop Conformal Coating System

DESKTOP ROBOT MAIN SPECIFICATIONS

Model	SER-500
Working range (X/ Y/ Z) mm	500 x 500 x 100
Max. load Y/ Z Axis	10kg/ 5kg
Speed X & Y/ Z (mm/sec)	800/350
Repetitive Positioning Accuracy	±0.02mm/axis
Program Capacity	Min. 100 group, 4000 points/group
Data Storage Type	CF Card
Byte	32 bit
Program Display	LCD
Motor System	Micro stepping motor
Mode of transmission	Synchronous belt
Interpolation Function	3 axis
Teaching Method	Teach Pendant
I/O Signals Port	8 Inputs/ 8 Outputs
External Control Interface	RS232
Power Supply	AC100 - 230V 300W
Working Temperature	10 ~ 40°C
Working Relative Humidity	20 ~ 90% no condensation
Dimension (L x W x H) mm	785 x 700 x 610
Total weight	58kg

SER-500DC

Desktop Conformal Coating System

GV-697 NON-ATOMIZING FILM COATING VALVE

Selective Conformal Coating/ Spraying Valve

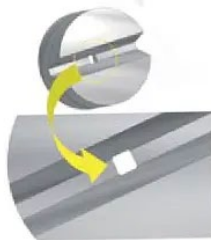
The GV-697 conformal coating valve is specifically engineered to administer moisture-resistant coatings onto PCBs at a reduced flow rate. Its unique square-cut nozzle design guarantees exceptional stability and prevents any excess spray, resulting in a faster and mess-free dispensing process.

FEATURES

- Consistent and precise coating
- No overspray or misting
- Customizable spray quality
- Gentle and controlled spraying



Spray pattern



Square-cut nozzle



SPECIFICATIONS

GV-697	Value
Dimension	26.9 x 36.9 x 141 mm
Net weight	334g
Viscosity	< 500cps
Fluid inlet port	1/8NPT female
Mounting hole	M6 female
Valve operating air pressure	0.4 ~ 0.62 MPa
Outlet	M6 female
Cylinder body material	SUS303
Nozzle connector	SUS303
Runner material	SUS303

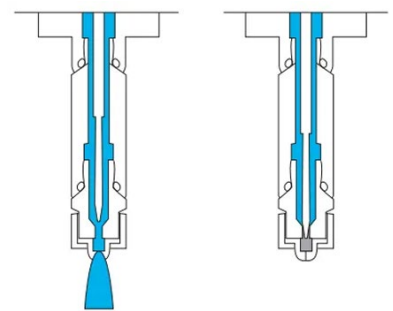
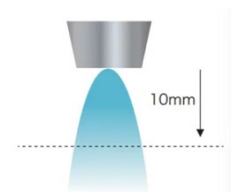


Figure 1

Figure 2



SER-500DC

Desktop Conformal Coating System

GC-850V SPRAYING VALVE CONTROLLER



- Suitable to control all kinds of pneumatic valve, such as diaphragm valve, firing pin valve, Piston valve, Spray valve, Screw valve & with encoder motor screw valve;
- Dispenser controller timer, pressure are all digital display, and can be exactly regulate;
- It can set 10 changable, sequential or single dispensing points;
- Diversification dispensing mode, as timing, moving, teaching and interrupting this four dispensing modes;
- It can store 10 dispensing programs which can flexibly respond to the change of different points' dispensing quantity;
- RS232 port and foot switch to trigger & control to achieve automatic dispensing;
- With adjust low pressure alarm function;

SPECIFICATION

GC-850SV	Value
Dimension	L254 x W191 x H102 mm
Cycle Time	900 cycles/min
Timing range	0.008 ~ 60.000 s
Timing repeatability	0.001%
Air input	Max. 100 Psi (6.9 bar)
Air output	1 ~ 100 Psi (0.7 ~ 6.9 bar)

SER-500DC

Desktop Conformal Coating System

GV-575

Suck-back Dispensing Valve

The GV-575 precision needle valve with a suck-back feature has been specifically engineered to deliver precise application of low-viscosity fluids, ensuring accuracy in every use. Additionally, the valve's packing structure is uniquely designed to enhance its durability, guaranteeing long-lasting performance.

FEATURES

- Suck-back Dispensing Valve – Faster response speed enables clear cut-off of the fluid
- Unique packing structure enhances durability
- The drip-free design ensures millions of cycles



GC-832V



GC-832V controller is a fast, convenient way to adjust valve open time in increments as small as 0.001 seconds, right at the dispensing station. The result is exceptional process control without time-consuming programming or mechanical adjustments that require the production line to be shut down.

FEATURES

- Microprocessor - based control
- Time digital display from 0.001~99.99
- Cycle: 0.05%
- Unique TEACH function
- Memory for time recorder

SPECIFICATIONS

GC-832V	Value
Air input	0.5 ~ 0.9 bar
Air output	0.01 ~ 0.8 bar
Repeat Tolerance	±0.1%
Min. volume	0.005ml (depend on liquid and valve type)
Speed	> 600 cycles/min
Dispense time	0.001 ~ 99.99 sec +/- 0.1%
Voltage	110V/220V±10% 50Hz
Power Consumption	< 15W