

## SER-300-300

Desktop Dispensing System for 300ml Cartridge Silicone Adhesive

The SER-300-300 is a cutting-edge desktop dispensing robot engineered for precision applications of high viscosity adhesives such as silicone or polyurethane. Designed to handle cartridge package sizes of 300ml or 330g, this versatile robot ensures accurate and consistent dispensing, making it an ideal choice for various industrial and manufacturing processes.

It combines our SER Desktop Robot Series, GV-480 or GV-460 High Viscosity Dispensing Valve, GC-832V Valve Controller & Silicone Cartridge Adhesive Retainer or Holder to form one compact system which can be placed onto benchtop.



### FEATURES

- Can handle different package size of silicone adhesive from 85g to 330g.
- Dispensing area from 200x200x100 mm to 600x500x100 mm
- Dot, Lines, Arc etc. and 3D dispensing path is available.
- 100 programs, 4000 points per program.
- A hand-held Teach Pendant is provided for simple and intuitive programming functions.
- Apply adhesives, cyanoacrylates, silicone, RTV, anaerobic resin, epoxy, UV cure formulations and many more fluids.
- Windows SRE software is available for CAD file input (optional).

### OPTIONS



4-axis/ 5-axis



Multiple Heads



Dual Table

## SER-300-300

Desktop Dispensing System for 300ml Cartridge Silicone Adhesive

### DESKTOP ROBOT MAIN SPECIFICATIONS

Model	SER-200	SER-300	SER-400	SER-500
Working range (X/ Y/ Z) mm	200 x 200 x 50	300 x 300 x 100	400 x 400 x 100	500 x 500 x 100
Max. load Y/ Z Axis	5kg/ 3kg	11kg/ 6kg		
Speed X & Y/ Z (mm/sec)	500/350	800/350		
Repetitive Positioning Accuracy	±0.02mm/axis			
Program Capacity	Min. 100 group, 4000 points/group			
Data Storage Type	CF Card			
Byte	32 bit			
Program Display	LCD			
Motor System	Micro stepping motor			
Mode of transmission	Synchronous belt	X/Y Axis synchronous belt, Z Axis precision ball screw		
Interpolation Function	3 axis			
Teaching Method	Teach Pendant			
I/O Signals Port	8 Inputs/ 8 Outputs			
External Control Interface	RS232			
Power Supply	AC100 - 230V 300W			
Working Temperature	10 ~ 40°C			
Working Relative Humidity	20 ~ 90% no condensation			
Dimension (L x W x H) mm	385 x 380 x 500	485 x 505 x 610	585 x 610 x 610	785 x 700 x 610
Total weight	23kg	34kg	41kg	56kg

## SER-300-300

Desktop Dispensing System for 300ml Cartridge Silicone Adhesive

### LIQUID CONTROL

Feeding from various glue package size (Standard Option)



- Different Cartridge Size Holder
- Level Sensor
- Jig



PN	Total Length	Inner Diameter	Outer Diameter
aG-CHD-60	175mm	43mm	79mm
aG-CHD-80	224mm	44mm	50mm
aG-CHD-120	300mm	44mm	50mm
aG-CHD-200	350mm	69mm	77mm
aG-CHD-300	362mm	70mm	79mm

### Advanced Options



330g Piston Pump



330g Screw Pump

## SER-300-300

Desktop Dispensing System for 300ml Cartridge Silicone Adhesive

### LIQUID CONTROL

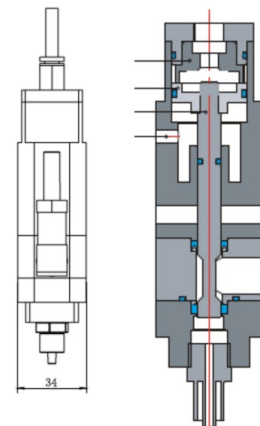
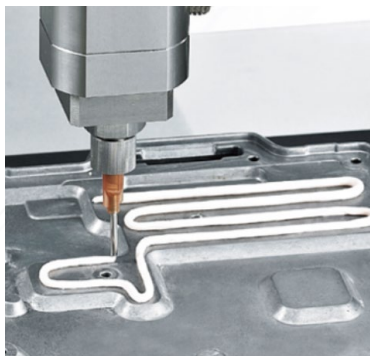
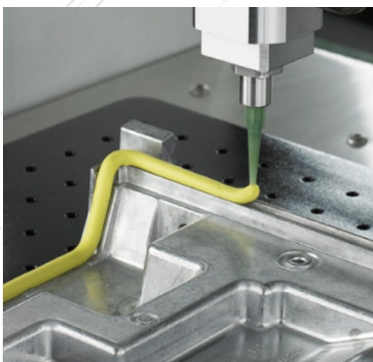
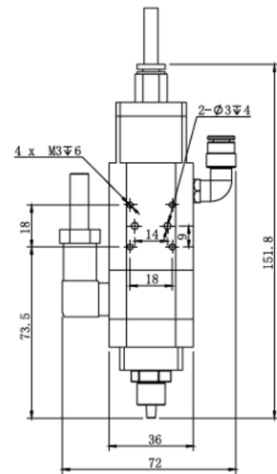
#### GV-480 Dispensing Valve

GV-480 is a high-pressure dispensing valve designed to dispense high-viscosity fluids such as silicones, RTVs, sealants, pastes, and greases. GV-480 high-pressure valve provides a snap-release shut-off after dispensing, creating a such-back effect that prevents any dripping.

- Adjustable back suction, clean broken glue
- Head and tail glue volume is controllable
- All stainless steel structure, strong and durable
- Dual air path design, quick break
- Simple Maintenance



Properties	Value
Size	34 x 34 x 151.8 mm
Weight	880g
Viscosity range	10,000 ~ 1,000,000 cps
Quantity of material per min	5L/min
Maximum number of cycles	400 times/min
Min. driving pressure	70 psi
Max. driving pressure	3000 psi
Material of driving part	Stainless Steel
Material of fluid port	Stainless Steel
Material of firing pin	Cemented carbide



## SER-300-300

Desktop Dispensing System for 300ml Cartridge Silicone Adhesive

### LIQUID CONTROL

#### GC-832V Valve Controller

GC-832V controller is a fast, convenient way to adjust valve open time in increments as small as 0.001 seconds, right at the dispensing station. The result is exceptional process control without time-consuming programming or mechanical adjustments that require the production line to be shut down.

- Microprocessor - based control
- Time digital display from 0.001~99.99
- Cycle: 0.05%
- Unique TEACH function
- Memory for time recorder



Properties	Value
Dimension	215 x 225 x 90mm
Weight	1.87kg
Air input	0.5 ~ 0.9 bar
Air output	0.01 ~ 0.8 bar
Repeat Tolerance	±0.1%
Min. volume	0.005ml
Speed	>600 cycles/min
Dispense time	0.001 ~ 99.99 sec +/-0.1%
Voltage	110V/220V±10% 50Hz
Power Consumption	< 15W

# GSP-S

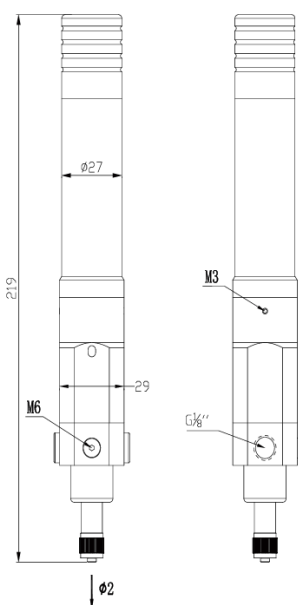
## Mini SINGLE PROGRESSIVE CAVITY PUMP

GLUDITEC GSP precision of progressive cavity pumps is a result of their positive displacement action, precise screw geometry, variable speed control, linear flow characteristics, and low pulsation, making them well-suited for applications that demand accurate and consistent fluid dispensing.

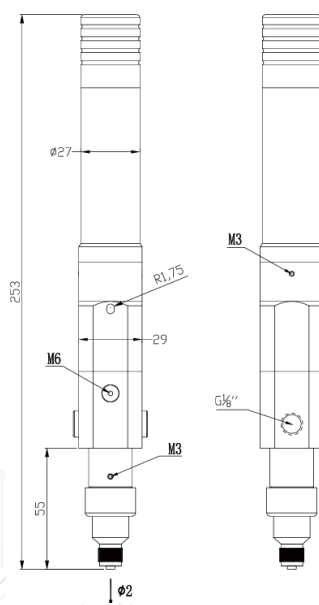
Model	ml/rev	Speed (mL/min)	Inlet	Net weight (g)
GSP-030S	0.003mL	0.03~ 0.36	1/8"	350
GSP-100S	0.01mL	0.1~1.2	1/8"	350
GSP-600S	0.06mL	0.6~7.2	1/8"	400
GSP-2000S	0.203mL	2~24	1/8"	1.3



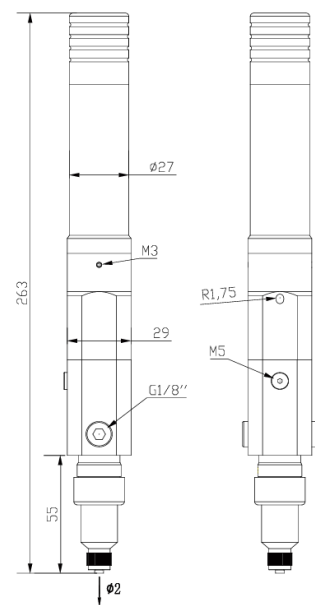
## Drawing



GSP-030S & GSP-100S



GSP-600S



GSP-2000S

# GCP Controller

## SINGLE PROGRESSIVE CAVITY PUMP CONTROLLER

Properties	GCP-1000	GCP-2000	Non-standard customization
Dimensions (WxDxH)	250 x 220 x 125 mm	250 x 220 x 125 mm	<p>In order to adapt to the progressive cavity pump in different working conditions, GCP controller can be customized. For example: 1 controller for 4 pumps/ 8 pumps or even 16 pumps</p>
Weight	3.4kg	3.6kg	
Power	AC110 ~ 250V, 50/60Hz	AC110 ~ 250V, 50/60Hz	
Screen	4.3" Touch Screen	4.3" Touch Screen	
Number of controlled pump	1	2	
Control Signal	Switching semaphore	Switching semaphore	
Ambient Temperature	10 ~ 40 °C	10 ~ 40 °C	



**GCP-1000**



**GCP-2000**

